



INSTALLATION GUIDE

KALBKOMFORT N20 PRÄRIE

Rubber cover suitable for MIK PRÄRIE calf slats

This comfort flooring was specially developed for use in combination with MIK PRÄRIE calf slats. It consists of a perforated rubber sheet with a special nubbed geometry on the underside.



For installation you require

- ✓ Tape measure or metre rule for measuring
 - ✓ Knife, rail, screwdriver
- When using a concrete surface
- ✓ Drill with 10 mm iron drill bit
 - ✓ Hammer, impact drill with 8 mm concrete drill bit



Fastening elements

- ✓ Special dowel from MIK incl. stainless steel screws
- When using a concrete surface
- ✓ Nail plug A2 8 x 80 with washers with bead



Surface requirements

- ✓ MIK PRÄRIE calf slats



Rubber cover requirements

- ✓ The coverings must be stored on the installation surface for at least 48 hours or 7 days at room temperature before installation so that the covering reaches a uniform temperature.
- ✓ At ambient temperatures below 10 degrees Celsius, the installation must not be carried out.

1 Adjusting the rubber cover



- ✓ The rubber pad is laid out at one corner and adjusted.

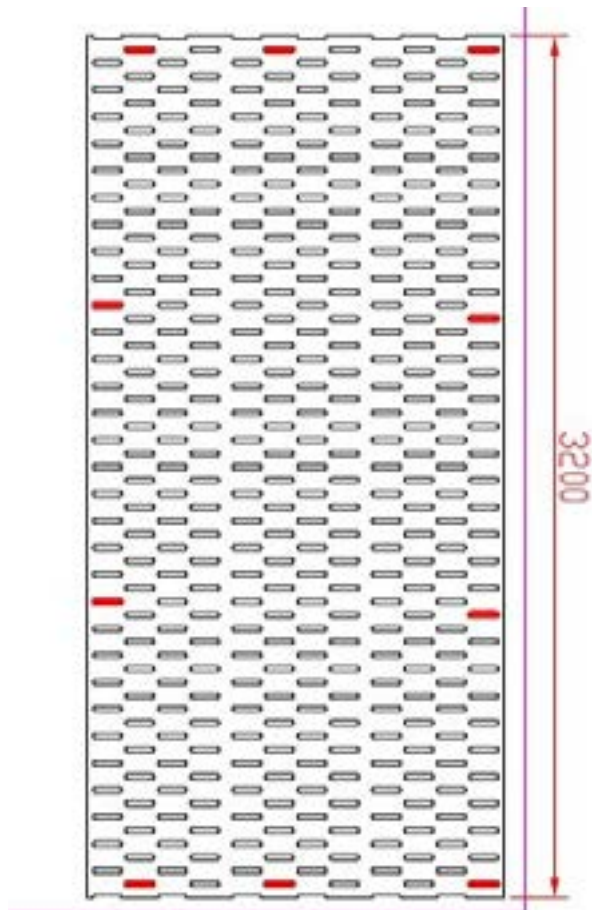


Make sure that the holes in the rubber cover match the holes in the MIK plastic slats.

KALBKOMFORT N20 PRÄRIE

Rubber cover suitable for MIK PRÄRIE calf slats

2 Attach dowels

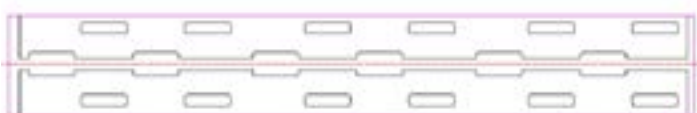


- A** 3 fixing dowels are required on each of the 1200 mm long sides (1 fixing per MIK plastic slat)
- B** The dowel is inserted from above through the hole in the rubber cover and the hole in the plastic slats. Now the stainless screw is slowly screwed in. The dowel expands.
- C** On the long side, one fixing is required in every 3rd slat. This corresponds to a distance of about 1 m from dowel to dowel.

Note Approx. 10 fixing dowels per rubber cover (3.20 x 1.20 m). The red markings in the drawing show the position of the dowels.



3 Cut rubber cover



If it is necessary to cut the rubber covers to size, make sure that the cuts are centred through the elongated holes in the rubber cover.

This ensures that the accuracy of fit between the rubber and the substructure is maintained.

Use a carpet knife and a rail, for example, to cut to size.

Note The dotted line in the drawing shows where the cut is to be made.

KALBKOMFORT N20 PRÄRIE

Rubber cover suitable for MIK PRÄRIE calf slats

4 Laying and fastening additional covers



Lay further covers using the „laminate method“ >> If an overlay is cut through, start the next strip with the remainder of the previous rubber cover.

Note Make sure that you do not twist the rubber overlays when laying (see drawing, red markings).

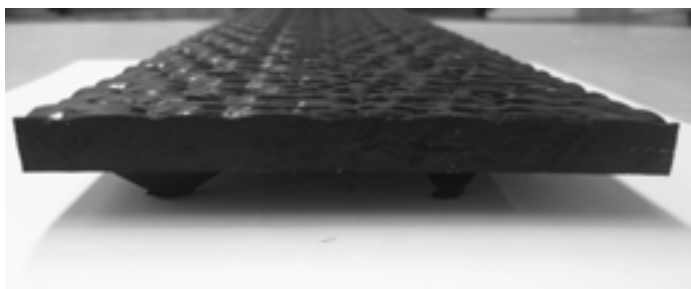
Fit out the entire bay in this way.

Note Ensure that the rubber covers are correctly aligned and fixed in place with dowels.

Individual rubber cover pieces should always cover at least 2 plastic slats, both in width and length.

Always use 1 dowel per plastic slat on the narrow sides. Attach 1 fixing per linear metre on the long sides. This corresponds to 1 fixing on every 3rd plastic slat.

5 Concrete surface



In order to compensate for the height of a concrete surface, 100 mm and 200 mm wide strips of the same thickness are available by the metre. These are fixed with A2 8 x 80 nail plugs in 2 rows with a maximum spacing of 500 mm.




- A** Roll out the rubber strip over the concrete.
- B** Drill 10 mm holes in the rubber strip.
- C** Drill 8 mm holes in the concrete.
- D** Insert the plastic dowel through the rubber strip into the hole in the concrete.
- E** Drive in the nail together with the washer until the washer rests on the rubber.



Care and maintenance instructions

The rubber surfaces must be cleaned regularly. The cleaning agents must not attack the rubber coating.

Note Proper installation may vary depending on local conditions.
No manufacturer's liability for installation damage.

Follow us on   

 www.cow-comfort-huber.com

Huber Technik Vertriebs GmbH

△ Robert-Bosch-Str. 8 · 85435 Erding · GERMANY

☎ +49 8122 869 122 · ✉ vertrieb@huber-technik.de