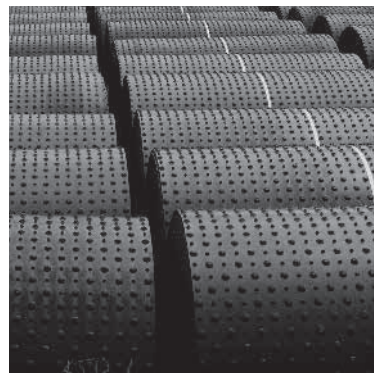
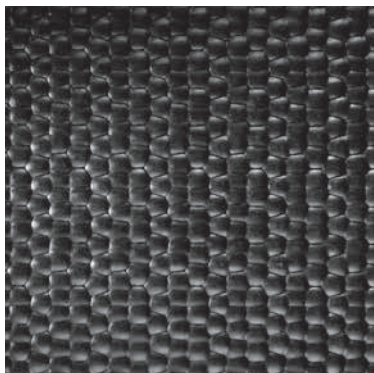
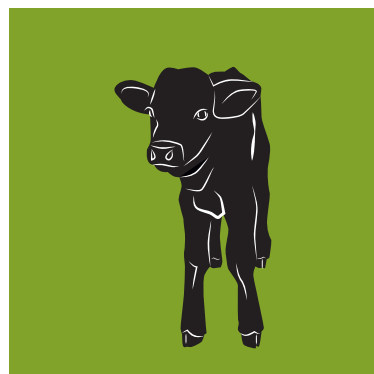
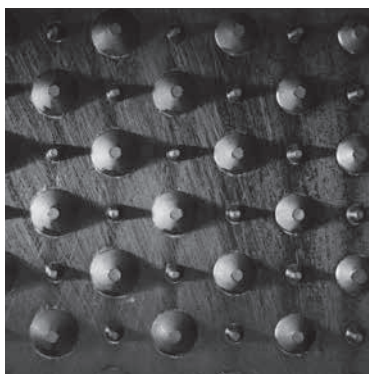
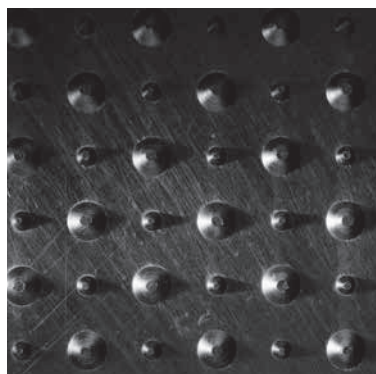




# HUBER KNOWS WHAT COWS LIKE.

Cubicle ■ Alley way ■ Milking parlour

Endless stable coverings made of rubber



**HUBER  
TECHNIK**  
Vertriebs GmbH



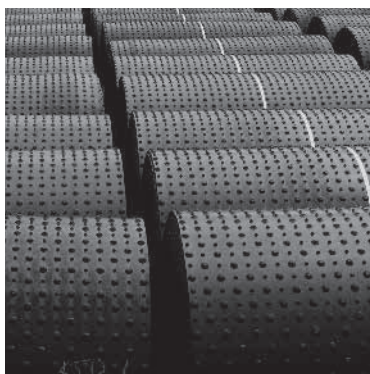
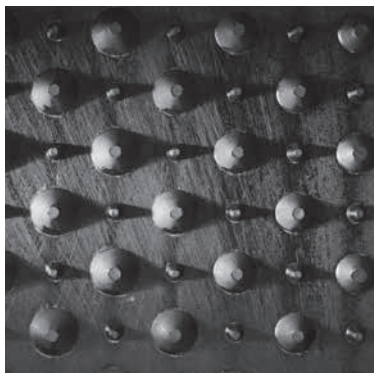
# HUBER TECHNIK ONE BRAND, ONE FAMILY

For almost 100 years, the name Huber in Erding has stood for rubber and metal processing. Our motivation? Passion. Through passion for what we do, continuous development and safe management of the company has been possible for 4 generations. In order to maintain genuine added value, we stick to the quality Made in Germany.

**It's the mixture that makes the difference** – this also applies to rubber products. We produce all stable coverings without exception at our company headquarters in Bavaria. Our solutions were developed here and are therefore always based on in-house recipes that only allow the best raw materials.

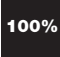


**Strong together** – We are proud of the growing, international Huber Technik dealer network and export our products worldwide through these valuable partnerships. The Huber Technik brand promises top quality with far-reaching benefits for animals and humans.

## HUBER KNOWS WHAT COWS LIKE.






# QUALITY MADE IN GERMANY







## QUALITY PRODUCT

-  **100 % virgin rubber with high binding power**
-  **Tested by the DLG (German Agricultural Society)**
-  **Resistant to ageing due to ozone protection**

## COW COMFORT

-  **Lying comfort and stability**
-  **Special nubs on the underside**
-  **Promotes healthy joints**

## PROPERTIES

-  **Rolls up to 100 meters/328 ft in one piece**
-  **Seamless for easy cleaning**
-  **Easy installation – very simple and quick**  
**installation due to roll goods and the handy size**  
**of the composite foam panels**
-  **None to very few joints**
-  **Less wear and soiling**
-  **Suitable for any cubicle width, as no joints are**  
**necessary with roll goods**

**Huber Technik stable coverings**  
**fulfill the standards DIN 3762 and**  
**DIN 3763 for elastomer mats.**

## WHAT DOES THIS MEAN?

### DIN 3763

The standard specifies the term “comfort mat” for the first time, which is defined in the Animal Welfare Ordinance as well as in the Agricultural programme of the federal government, but is not explained in detail. The definition that has now been established, developed by an expert committee in the DIN standard committee, was first published in April ‘20 and updated in August ‘22. “DIN 3763” provides farmers important decision-making aids in case of uncertainties investment-planning.

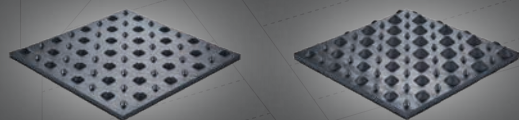
### DIN 3762 (PAH)

A test method for determination of the transmission rate of polycyclic aromatic hydrocarbons (PAH) was standardized here. PAH values are almost non-existent in our quality products and could not be verified in the test procedure. Some PAH compounds are considered carcinogenic and should under no circumstances be transferred from a stable mat to the animal – for animal and consumer protection reasons.





# PRODUCT OVERVIEW



## CUBICLE COVERINGS

### Comfort rolls

N20 ■ N25 ■ N33

### Soft beds

HT 4GS ■ HT 4GS WINGS ■ HT 8GS ■ HT 8GS WINGS

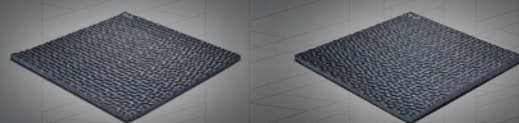
### Kombibox

HT Kombibox for deep boxes

### Product advantages

#### ✓ Softness & elasticity

- Gentle on joints when lying down and standing up
- High lying comfort = longer lying times
- Longer chewing time = higher milk product



## ALLEY COVERINGS

### Milking parlour, raised feeding stall

N15

### Walkway

N15 ■ N18 ■ N26 ALLEY

### Product advantages

#### ✓ Safe standing

- Species-appropriate comfort behaviour
- Three-legged stand for body cleaning
- Scratching of head and ears with hind claws

#### ✓ Dry claws

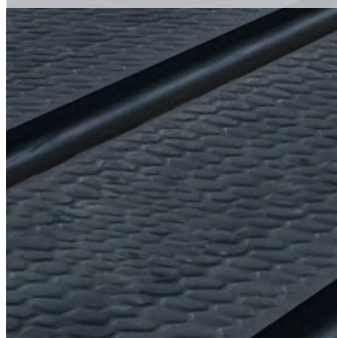
- Hoof relief
- Healthy horn growth

#### ✓ Promotion of natural behaviour

- Shorter grazing time

Installation instructions and DLG test reports can be found at:

 [www.cow-comfort-huber.com](http://www.cow-comfort-huber.com)

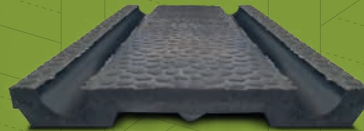


# NEW PRODUCT

 **Inhibits ammonia formation**



**N26 ALLEY**



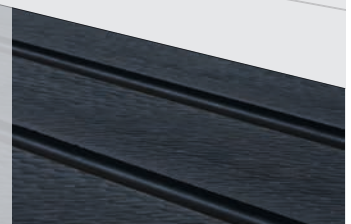
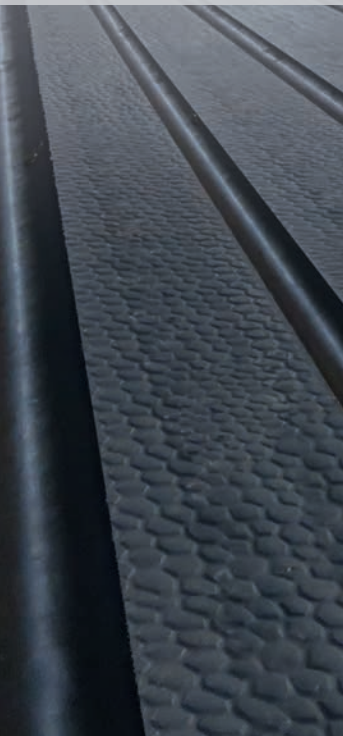
**Surefootedness**



<b>Application</b>	<ul style="list-style-type: none"> <li>■ Alley floor for plan fastened walkways with flap scraper</li> <li>■ New and special construction to separate faeces and urine with grooves and 6% slope to the grooves</li> </ul>
<b>Suitability</b>	New building and refurbishment
<b>Thickness</b>	26 mm
<b>Dimensions</b>	
Lenght	10 m to 70 m
Width	Max. 2.00 m
<b>Profile</b>	
Top	Hammered profile & grooves
Bottom	Studs & grooves
<b>Penetration depth</b>	4.5 mm
<b>Special features</b>	<ul style="list-style-type: none"> <li>+ Separation of faeces and urine</li> <li>+ Requires adjusted scraper bar to cleaning plates</li> </ul>
<b>Verlegung</b>	Rolled solution

## Advantages at a glance

- ✓ **Urine drainage**
  - cows don't stand in urine
  - dry claws = sound claw growth
  - reduction of claw diseases
- ✓ **Cost savings** by less vet treatments
- ✓ **Clean cows** and less squirt excrements
- ✓ **Good barn climate by NH3 reduction**
- ✓ **Easier estrus recognition** by stable stand
  - supports fertility
- ✓ **Sound musculoskeletal system** by soft walkways



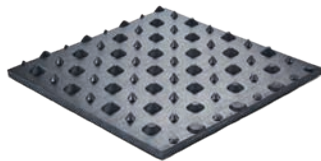
# CUBICLE COVERINGS – COMFORT ROLLS



N20



N25



N33



Comfort



<b>Application area</b>	High stalls for dairy cattle and young cattle	High stalls for dairy cattle and young cattle	High stalls for dairy cattle
<b>Suitability</b>	New construction and renovation	New construction and renovation	New construction and renovation
<b>Thickness</b>			
Cover Sheet	10 mm	13 mm	13 mm
Studs	10 mm	12 mm	20 mm
Total	20 mm (weight: 12.9 kg/m <sup>2</sup> )	25 mm (weight: 15.1 kg/m <sup>2</sup> )	33 mm (weight: 17.2 kg/m <sup>2</sup> )
<b>Dimensions</b>			
Length	10 m to 50 m	10 m to 50 m	10 m to 40 m
Width	1.20 m to 3.00 m (in 100 mm steps)	1.80 m	1.90 m
Slope	With the possible special width of 1.85 m, the rubber cover has a slope in the head and foot area on the outer 100 mm	With slope in the head and foot area on the outer 100 mm	With slope in the head and foot area on the outer 300 mm
<b>Profile</b>			
Top	Hammered profile	Hammered profile	Hammered profile
Center	Fabric reinforcement	Fabric reinforcement	Fabric reinforcement
Underside	10 mm stud profile	12 mm stud profile	12 mm and 20 mm stud profile
<b>Penetration depth</b>	10.6 mm according to DLG test procedure	11.6 mm according to DLG test procedure	16.1 mm according to DLG test procedure
<b>Special features</b>	+ slope on both sides at 1.85 m width + Solid rubber profile + Easy installation	+ Slope on both sides + Solid rubber profile + Easy installation	+ Slope on both sides + Solid rubber profile + Easy installation
<b>Installation</b>	Rolls	Rolls	Rolls

DIN-3763  
Grade 2

DIN-3763  
Grade 2

DIN-3763  
Grade 3



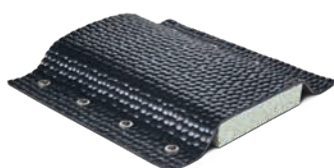
# SOFT BED



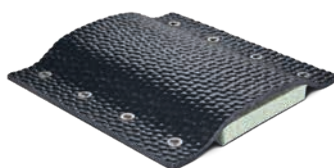
on the complete system



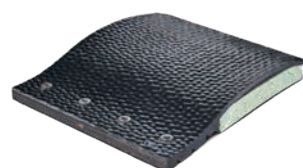
## SOFT BED HT 4GS



## SOFT BED HT 8GS



## SOFT BED HT 4GS WINGS



### Comfort



<b>Application area</b>	High stalls for dairy cattle and young cattle
<b>Suitability</b>	New construction and renovation
<b>Thickness</b>	
Cover sheet	4 mm (weight: 5.5 kg/m <sup>2</sup> )
Head/Foot area	–
Composite foam	Optional 30 mm or 40 mm
Total	34 mm or 44 mm
<b>Dimensions</b>	
Length	10 m to 100 m
Width	1.80 m or 2.00 m
<b>Profile</b>	
Top	Hammered profile
Underside	Smooth, reinforced with extra strong fabric
Base	30 mm or 40 mm composite foam, opt. wrapped in foil
<b>Penetration depth</b>	19.8 mm according to DLG test procedure with 30 mm composite foam
<b>Special features</b>	+ Fast drainage of liquids + Particularly tear-resistant
<b>Installation</b>	Rolls + composite foam plates

**DIN-3763**  
Grade 3

<b>Application area</b>	High stalls for dairy cattle and young cattle
<b>Suitability</b>	New construction and renovation
<b>Thickness</b>	
Cover sheet	8 mm (weight: 10.2 kg/m <sup>2</sup> )
Head/Foot area	–
Composite foam	Optional 30 mm or 40 mm
Total	38 mm or 48 mm
<b>Dimensions</b>	
Length	10 m to 70 m
Width	1.80 m or 2.00 m
<b>Profile</b>	
Top	Hammered profile
Underside	Smooth, reinforced with extra strong fabric
Base	30 mm or 40 mm composite foam, opt. wrapped in foil
<b>Penetration depth</b>	25.3 mm according to DLG test procedure with 40 mm composite foam
<b>Special features</b>	+ Fast drainage of liquids + Particularly tear-resistant
<b>Installation</b>	Rolls + composite foam plates

**DIN-3763**  
Grade 4

<b>Application area</b>	High stalls for dairy cattle and young cattle
<b>Suitability</b>	New construction and renovation
<b>Thickness</b>	
Cover sheet	4 mm (weight: 8.4 kg/m <sup>2</sup> )
Head/Foot area	19 mm solid rubber profile
Composite foam	Optional 30 mm or 40 mm
Total	34 mm or 44 mm
<b>Dimensions</b>	
Length	10 m to 35 m
Width	1.80 m
<b>Profile</b>	
Top	Hammered profile
Underside	Smooth, reinforced with extra strong fabric
Base	30 mm or 40 mm composite foam, wrapped in foil
<b>Penetration depth</b>	19.8 mm according to DLG test procedure with 30 mm composite foam
<b>Special features</b>	+ Fast drainage of liquids + Particularly tear-resistant + Reinforced and stable entry step
<b>Installation</b>	Rolls + composite foam plates

**DIN-3763**  
Grade 3

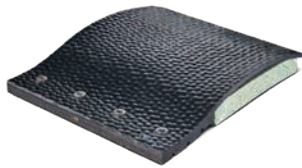
# SOFT BED/KOMBIBOX



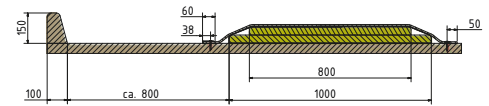
on the complete system



## SOFT BED HT 8GS WINGS



## HT KOMBIBOX



<b>Application area</b>	High stalls for dairy cattle and young cattle
<b>Suitability</b>	New construction and renovation
<b>Thickness</b>	
Cover sheet	8 mm (weight: 12.1 kg/m <sup>2</sup> )
Head/Foot area	23 mm solid rubber profile
Composite foam	Optional 30 mm or 40 mm
Total	38 mm or 48 mm
<b>Dimensions</b>	
Length	10 m to 35 m
Width	1.80 m
<b>Profile</b>	
Top	Hammered profile
Underside	Smooth, reinforced with extra strong fabric
Base	30 mm or 40 mm composite foam, optionally in foil packed
<b>Penetration depth</b>	25.3 mm according to DLG test procedure with 40 mm composite foam
<b>Special features</b>	<ul style="list-style-type: none"> <li>+ Fast drainage of liquids</li> <li>+ Particularly tear-resistant</li> <li>+ Reinforced and stable entry step</li> </ul>
<b>Installation</b>	Rolls + composite foam plates

DIN-3763  
Grade 4



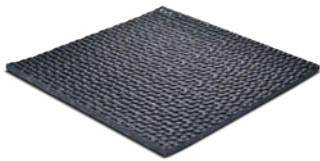
<b>Application area</b>	Deep box for dairy cattle and conversion from high to deep box
<b>Suitability</b>	New construction and renovation
<b>Thickness</b>	
Cover sheet	8 mm (weight: 10.2 kg/m <sup>2</sup> )
Composite foam	2 x 40 mm
Total	88 mm
<b>Dimensions</b>	
Length	10 m to 50 m
Width	1.30 m
<b>Profile</b>	
Top	Hammered profile
Underside	Smooth, reinforced with extra strong fabric
Base	2 x 40 mm composite foam plates
<b>Special features</b>	<ul style="list-style-type: none"> <li>+ Particularly tear resistant</li> <li>+ Combination of soft bed and deep box</li> </ul>
<b>Installation</b>	Rolls + composite foam plates



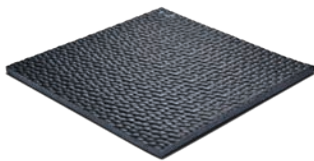
# ALLEY FLOORS



## N15



## N18



 Surefootedness

Application area	<ul style="list-style-type: none"><li>■ Walkway covering for level surfaces</li><li>■ Ideal for jointless waiting areas, available up to a width of 3.0 m</li><li>■ Calving and selection area</li><li>■ Raised feeding stall, milking stall, milking pit, etc.</li></ul>
Suitability	New construction and renovation
Thickness	
Top	10 mm
Studs	5 mm
Total	15 mm, weight: 12.9 kg/m <sup>2</sup>
Dimensions	
Length	10 m to 70 m from 2.00 m width, max. roll length 50 m
Width	0.50 m to 3.00 m (in 100 mm steps)
Profile	
Top	Hammered profile
Center	Fabric reinforcement
Underside	5 mm stud profile
Penetration depth	4,7 mm according to DLG test procedure
Special features	<ul style="list-style-type: none"><li>+ Solid rubber profile</li><li>+ Easy installation</li></ul>
Installation	Rolls

■ Walkway covering for level surfaces
■ Ideal for jointless waiting areas, available up to a width of 3.0 m
New construction and renovation
13 mm
5 mm
18 mm, weight: 15.1 kg/m <sup>2</sup>
10 m to 70 m from 2.00 m width, max. roll length 50 m
0.50 m to 3.00 m (in 100 mm steps)
Hammered profile
Fabric reinforcement
5 mm stud profile
4,7 mm
<ul style="list-style-type: none"><li>+ Solid rubber profile</li><li>+ Easy installation</li></ul>
Rolls

# ADVANTAGES AT A GLANCE

## COMFORT ROLLS N20/N25/N33



- ✓ Fast drainage of liquids due to a slope on both sides
- ✓ Years of dimensional stability due to the use of new rubber
- ✓ Optimum comfort due to special stud geometry

## SOFTBEDS HT 4GS/8GS ▪ 4GS WINGS/8GS WINGS



### 4GS/8GS

- ✓ Quick drainage of liquids due to a slight slope in the rear area of the soft bed
- ✓ Particularly tear-resistant due to extra-strong fabric
- ✓ Years of dimensional stability, as the composite foam sheet is designed for high point loads

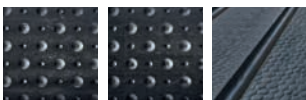
### 4GS WINGS/8GS WINGS

- ✓ Quick drainage of liquids due to a slight slope in the rear area of the soft bed
- ✓ Optimum sealing against wetness and moisture: 2-fold protection by sealing lip and wrapped composite foam
- ✓ Reinforced and stable tread due to a solid rubber profile
- ✓ Particularly tear-resistant due to extra-strong fabric
- ✓ Long-lasting dimensional stability, as the composite foam panel is designed for high point loads

## HT KOMBIBOX FOR DEEP BOXES

- ✓ High lying comfort due to combination of soft bed in the head part and deep box in the udder area: cow lying slightly uphill
- ✓ Optimal relief of the cow's carpal joints
- ✓ Significantly less bedding required
- ✓ Durable, stable padding in the front part of the cubicle
- ✓ Particularly tear-resistant due to extra-strong fabric
- ✓ Long-lasting dimensional stability, as the composite foam sheet is designed for high point loads

## ALLEY FLOORS N15/N18/N26 ALLEY



- ✓ Long-lasting dimensional stability due to solid rubber profile
- ✓ Optimum comfort due to special stud geometry
- ✓ Secure foothold due to troughing around the claw



# HUBER TECHNIK

## ANIMAL WELFARE & QUALITY



**WITH HT STABLE FLOORS, REQUIREMENTS OF THE FOLLOWING GUIDELINES CAN BE MET**

- ✓ **Animal Welfare Initiative – Criteria Catalogue for Dairy Cattle & Beef Cattle**
- ✓ **DLG-welfare (German Agricultural Society)**
- ✓ **QM-Dairy Sustainability Tool**



### **SOFT LYING SURFACES**

Lying surfaces don't just have to be soft, but also provide stability. The safe process of lying down and standing up must be guaranteed. Injuries and lying calluses are minimised. For lying surfaces, we offer coverings and soft beds which, due to their high level of comfort, increase the lying time of the animals and thus the well-being of the entire herd.



### **CLEANLINESS OF THE ANIMALS**

Solid components of faeces usually settle in transition areas between individual stall mats and make the conscientious cleaning very time-consuming. All HT stable mats can be laid almost seamlessly as roll goods. This makes cleaning easier, whether by machine or by hand. HT soft beds with a slight slope also allow urine to run off quickly. Our joint-free stable coverings ensure more stable hygiene – visible in cleaner and healthier animals.



### **UDDER HEALTH**

Mastitis is probably the most common udder disease, the development of which depends, among other things, on the husbandry. Here the Huber Technik stable coverings can make a decisive contribution in terms of hygiene and lying comfort. The better the cleanliness the more difficult it is for bacteria to cause inflammation. In optimally equipped lying areas the udder can rest clean, soft and dry.



### **STABLE CLIMATE**

The N26 ALLEY walkway flooring enables better separation of urine and faeces. Ammonia is noticeable due to its pungent smell and is created by the mixing of both excrements. Ammonia is harmful to the respiratory tract. Thanks to the special surface texture of the N26 ALLEY, urine can drain away more quickly and contact with faeces is reduced. In this way the air conditions in the stable can be improved in all weather conditions.



### **CHAFE OPTION**

With the extremely robust HT scrub mats, you can offer your cattle, cows or bulls the opportunity to scrub themselves extensively as required and improve their well-being. The HT scrub mats are simply attached to a support pillar or in a suitable passageway area. For wall mounting, it is recommended to additionally attach a spacer.



**Huber Technik  
Vertriebs GmbH**

△ Robert-Bosch-Str. 8  
85435 Erding  
Germany

☎ +49 8122 869 122

✉ [vertrieb@huber-technik.de](mailto:vertrieb@huber-technik.de)

 [www.cow-comfort-huber.com](http://www.cow-comfort-huber.com)



**HUBER  
TECHNIK**  
Vertriebs GmbH