

GOODS RECEIVED BUT ALLEGEDLY DEFECTIVE?

## INFORMATION SHEET ON RUBBER COVERINGS

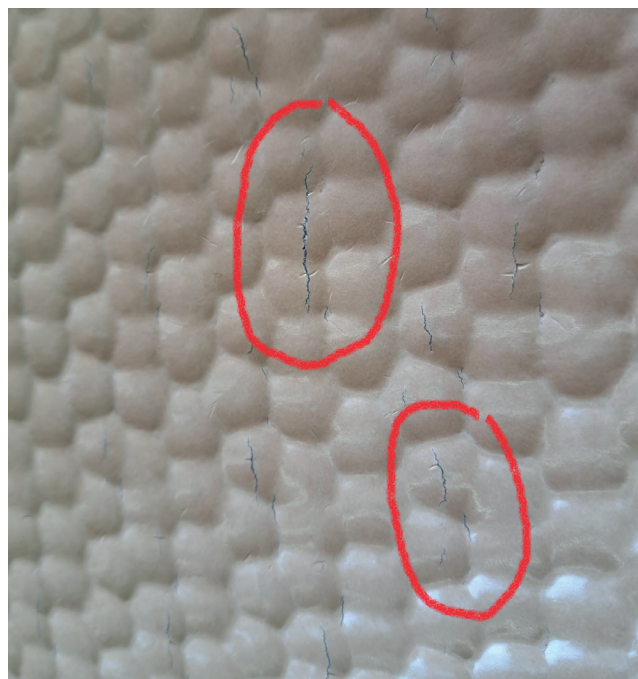
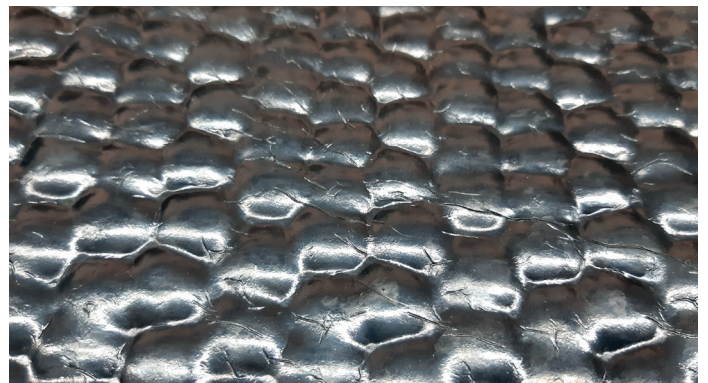
WE CAN REASSURE YOU!

If it is one of the following visual „beauty failures“, these are imprints of aids and moulds caused by production technology which do not affect the function of our rubber roll goods in any way.

### 1 Imprint due to tears in the release paper



Top side of the rubber covering with impressions of the cracks



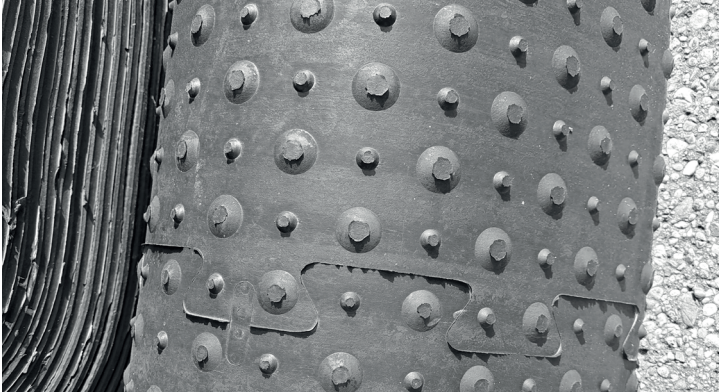
Silicone paper after approx. 2 uses (small cracks visible)

During our production process we use so-called silicone paper. This is a release paper with a **silicone layer**, which ensures that the rubber does not stick to the metal mould. This paper is reused approx. 2-4 times - in the spirit of sustainability, as it has to be disposed of afterwards. Due to the high pressure and the heat, the paper gets small tears, some of which are found in the surface of the rubber coating. It looks as if the rubber is cracked - fortunately this is not the case!

✓ **It is only an imprint and does not affect the functionality.**

# INFORMATION SHEET ON RUBBER COVERINGS

## 2 Puzzle-like impression due to plug-in connection in the moulding plate



Impression of the tack weld and the plug-in connection

The dimpled geometries on the underside of the rubber coverings are created by moulds into which the unvulcanised raw rubber is pressed into by pressure and heat. The tack welds and push-fit joints of the moulds are pressed onto the rubber.

✓ **Although it looks like it, this rubber was not put together afterwards, but was created from a single casting.**



Sheet metal for comfort covering N20 (seam visible)

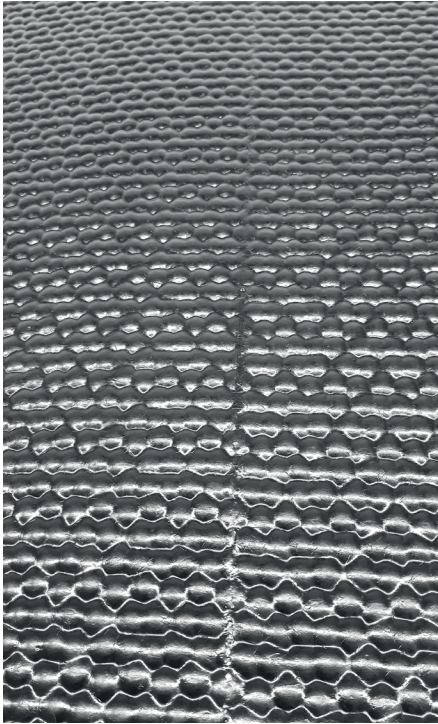
The moulds are made of metal and have to be partially stapled together in the middle due to the large size.



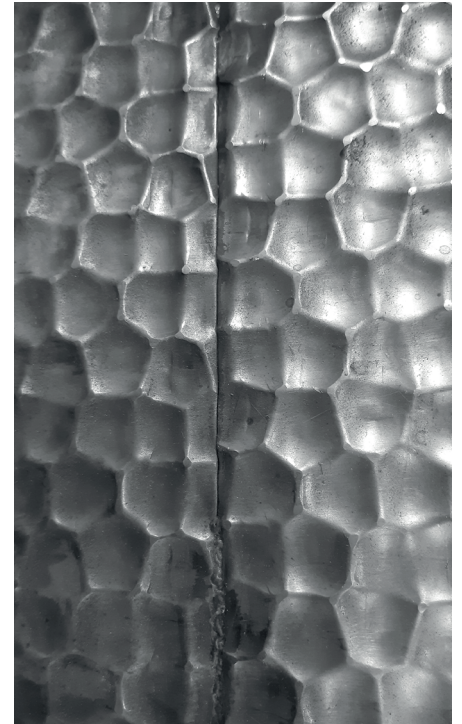
# INFORMATION SHEET ON RUBBER COVERINGS

3

## Impression of a weld seam in the embossing plate



Impressions of the weld seam



Weld seam in sheet metal

Similar to the case on the underside, some of our rubber coverings, which provide the proven hammered-blow profile on the top side, also have to be welded together. Here, too, weld seams are created that are pressed onto the top side and make it look as if they were vulcanised together afterwards. This is also deceptive!




✓ **All our rubber coverings are made of one piece!**

i

### Care and maintenance instructions

The rubber surfaces must be cleaned regularly. The cleaning agents must not attack the rubber surface. The rubber surface must be kept dry by using suitable entry material.

**Note:** Proper installation may vary due to local conditions.  
No manufacturer's liability in case of installation damage.

Follow us on   



[www.kuh-komfort-huber.com](http://www.kuh-komfort-huber.com)

**Huber Technik Vertriebs GmbH**

△ Robert-Bosch-Str. 8 · 85435 Erding

☎ +49 8122 869 122 · ✉ [vertrieb@huber-technik.de](mailto:vertrieb@huber-technik.de)